

Report
2024



We are go-getters!

alba

Annual report

01 We are Alba	02 Supports for people	03 Services for businesses	04 Organization	05 Transparency	06 Territory
<p>Manifesto</p> <p>Strategic Framework</p> <p>Organizational Chart</p> <p>50 Years of persones amb empenta</p> <p>Alba Community</p>	<p>Educational and Therapeutic Resources</p> <p>Community Inclusion</p> <p>Housing and Independent Living</p> <p>Mental health and well-being</p> <p>Culture and leisure</p> <p>Training and Work</p> <p>International projects</p>	<p>Cleanup</p> <p>Laundry</p> <p>Gardening</p> <p>Cuisine of collectivities</p> <p>Restaurant El Gat</p> <p>Cookie opener El Rosal</p>	<p>Organization healthy</p> <p>Organization innovative</p> <p>Organization sustainable</p>	<p>Sustainability economic</p> <p>Main investments 2024</p>	<p>Issue policy</p> <p>Alliances</p>



Video presentation of the
new image

01

We are Albà

Today's Alba is no longer the same as 50 years ago.

That is why we celebrate the anniversary by launching a new corporate image, but we retain the same essence and purpose as always.

We present ourselves to the world again with a manifesto that positions us where we want to be.

Manifesto

We believe in a **society with equal opportunities**, where obstacles are overcome collectively. A fairer and more solidary society, where any life project can become a reality.

To achieve this, we risk, challenge barriers and seek new ways to do things. From creativity, innovation, adding talents with the agents of the territory and learning from others. **Diversity enriches** us and from the difficulties we seek opportunities.

In this spirit, we have been welcoming, accompanying and supporting people in vulnerable situations and their families at all stages of their lives for 50 years. We have grown older, because the challenges are huge, and when we talk about people **we cannot leave anyone behind.**

But we are also aware that the great transformations come from small changes. That is why we work **to strengthen an inclusive and committed community** in the regions of Urgell and Segarra, a rural territory that we love and want to protect, often forgotten and full of challenges.

We dream by touching our feet on the ground, with determination and drive, convinced that all together we can **weave the future we want.**

Alba,
We are go-getters



Alba 2030 Strategic Framework

01 We are Alba

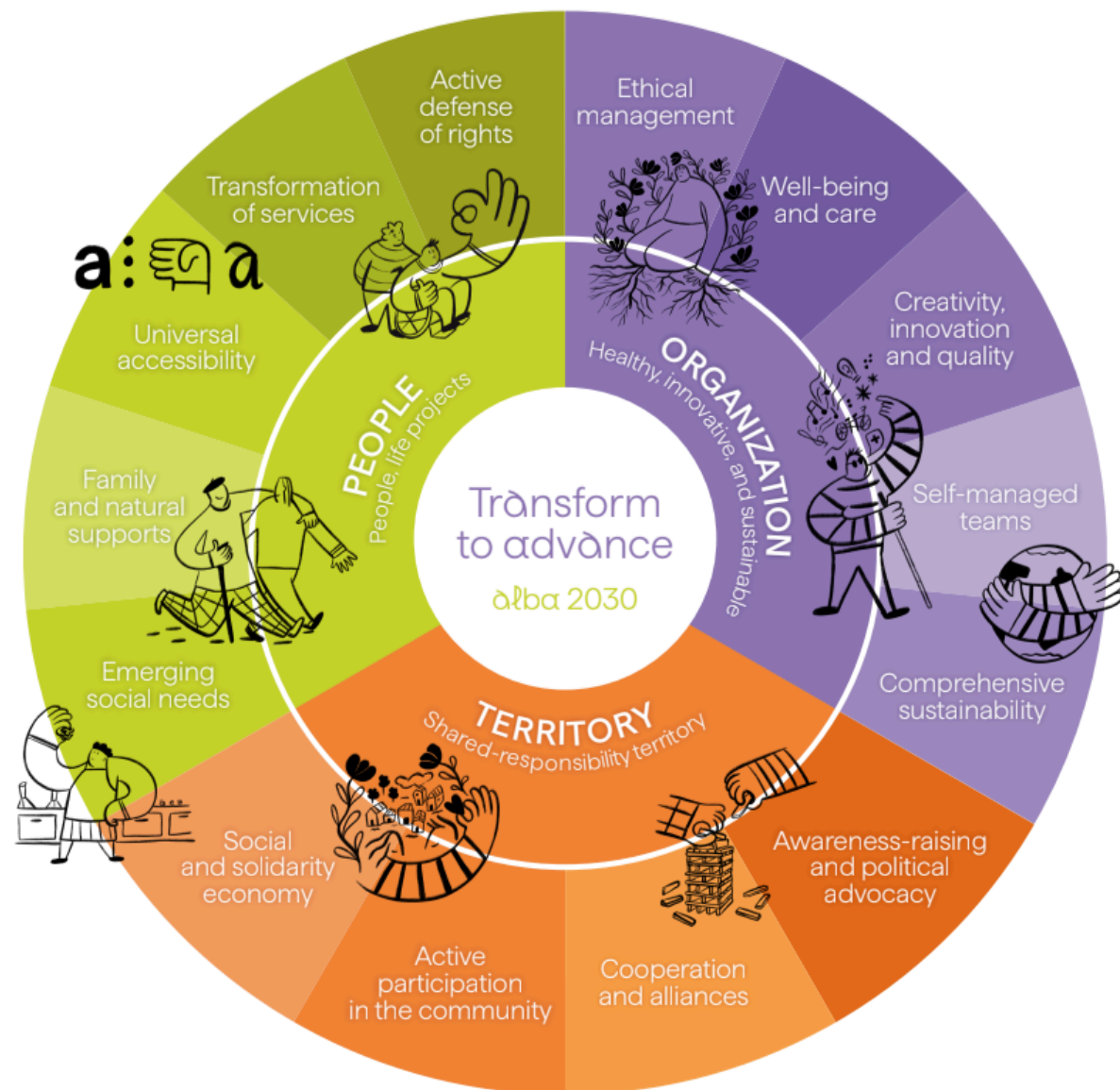
During 2023 we evaluated the impact of the actions carried out in the previous Strategic Framework and started a participatory work to mark the new roadmap of the entity. A new strategic framework that should help us build the Alba of 2030.

We focus the roadmap on 3 axes:

- People - Life Projects
- Organization, Healthy, Innovative and Sustainable.
- Corresponsible territory.

Each of the strategic objectives helps us to set our priorities and that of the projects we promote.

Alba 2030,
Transform to move forward!

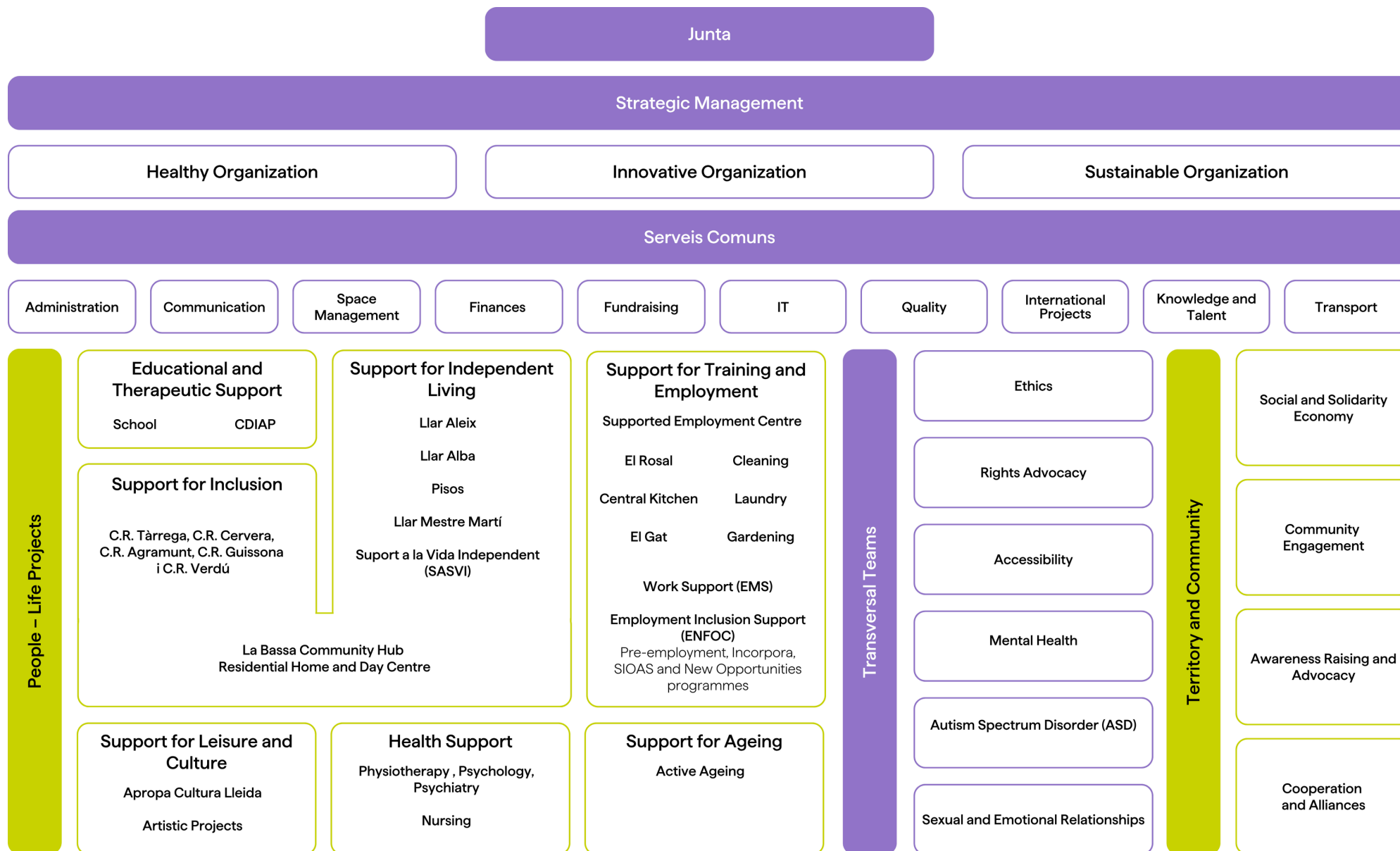


Video Strategic Framework

*Strategic framework Alba 2030 adapted to the new brand image

Organigram

01 We are Alba



50 years of driven people



1975

The Alba Association was founded thanks to a donation from the Tàrraga Junior Chamber. A classroom was started with 5 children with disabilities.

1996

Creation of the Special Employment Center with laundry and car wash services.

2003-2005

We acquire the El Rosal Cookie Workshop, launch activities at the Ca n'Aleix residence, and open the El Gat Restaurant.

2007-2008

We expand to support new groups and launch services for people with mental health challenges.

We commit to an organizational shift based on team self-management, participation, and shared decision-making.

2019

The Social Integration Company is created to support people at risk of social exclusion.

2020

During the COVID pandemic, the organization became an essential service for people.

2021

We bring services closer to where people live by creating resource centers in Guissona, Agramunt, and Verdú, adding to those already established in Cervera and Tàrraga.

2023

The construction of the La Bassa Community Facility is completed to address the aging needs of people living in the Vall del Corb.

1.245

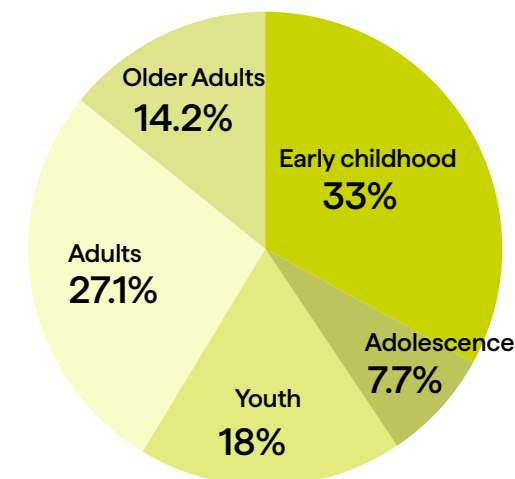
People who have used Alba's services in 2024

People with disabilities, older adults, or those at risk of social exclusion connected to Alba's services

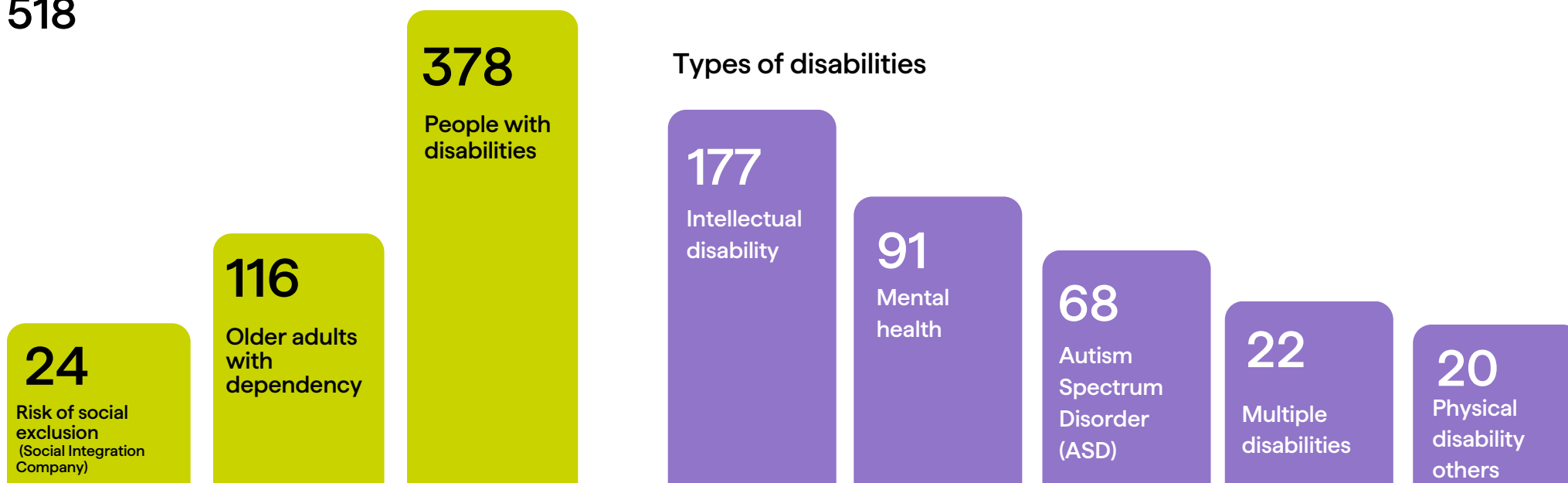
518



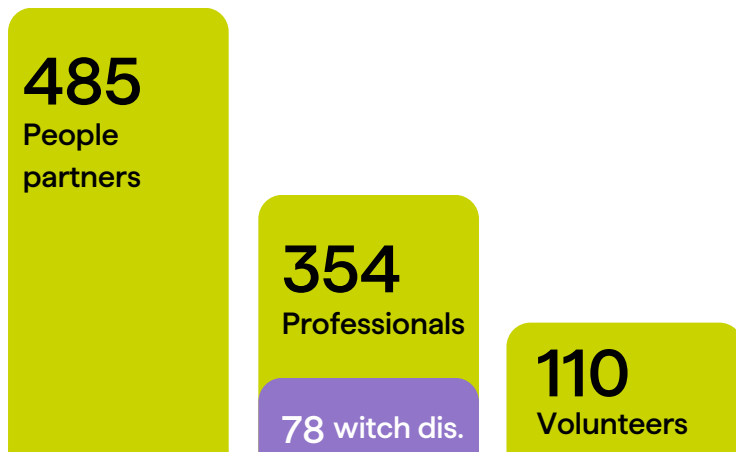
People by age



Types of disabilities



Driven people who make Alba possible



Women in leadership
positions
90%

With technical or
higher education
qualifications
30,51%

Number of full-time
positions
261,1
Salary Band Index
2,21



20.461 followers on Alba's social media

Total audience across
the different Instagram,
LinkedIn, and Facebook
profiles

Instagram 17.125 (8 profiles)

LinkedIn 1.042 (2 profiles)

Facebook 2.294 (2 profiles)

Partner companies
72

They are part of the Network of
Member Companies
16



02

Support for people

We support people in vulnerable situations to make their life projects a reality.

To achieve this, we provide services and resources for all stages of their lives, offering comprehensive 360° care.

Education and therapeutic resources

02 Support for People

We support people in their development process by offering tailored assistance that promotes autonomy, learning, and well-being. We create inclusive spaces where children and young people can develop their abilities and participate in the community.

Special Education School

Children served aged 6 to 21 years

46 children

Specific Educational Center for Inclusion Support and Resources (CEEPSIR)

Specialized support provided to mainstream schools to improve the care of students with special educational needs.

65 interventions

We work to respond to the growth in Autism Spectrum Disorder (ASD) cases, which have increased tenfold in the last 11 years.

We create spaces and methodologies adapted to students with multiple disabilities (pluridisability).

We innovate with new technologies to promote communication and autonomy for our students.



Child Development and Early Intervention Center (CDIAP)

Children served from 0 to 6 years old who experience developmental difficulties

362 children

+6.8% compared to 2023

9.200 hours



Community inclusion

We work to build an inclusive space where people with disabilities can participate, contribute, and feel part of the community. We promote projects that encourage autonomy and inclusion in the various towns of Urgell and Segarra.

6 occupational centers

121 people receive support

They provide daytime care, bringing services and resources closer to people with intellectual disabilities in the Urgell and Segarra regions.



Occupational Center El Taller (Tàrrega)

60 people

- TEACH Space
- Specialized in Autism Spectrum Disorder (ASD)
- Promotes sports activities with the **Alba Sports Club**
- Encourages community activities

Occupational Center Antic Museu (Verdú)

23 people

- A Community Cultural Space
- Multisensory Room

Occupational Center Cal Carreter (Agramunt)

16 people

- Project **ValdeFusta**, a social and creative carpentry workshop

02 Support for People

Occupational Center Cal Santacreu (Guissona)

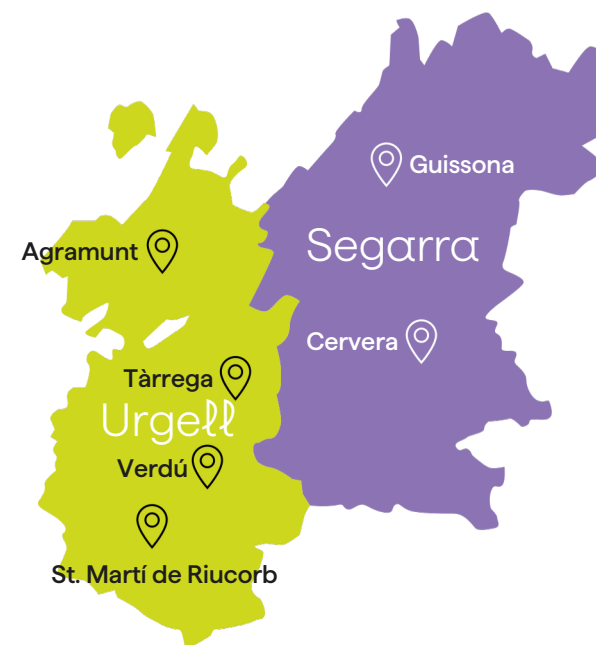
7 people

- Center that is part of the **Art Singular** project
- A space where people can develop their artistic talent

Occupational Center Espígol (Cervera)

14 people

- Promotes community activities



A new push for community life

Community activities have taken a big step forward thanks to the addition of new roles such as the community facilitator and personal assistant. They provide support that helps include everyone in community life.

**1,771 people
participating in
community activities**

Community activities promoted
18 activities

Highlighted community
project

2nd edition of Bòlit

A project that promotes inclusion through engagement with traditional games. During the traditional games gathering, participation is achieved from people with disabilities, older adults, children, and more.

150 participants



02 Support for People
Community inclusion

**Incorporation of 7
personal assistants for
16 people with
intellectual disabilities**

Hours of direct care provided
by personal assistants

5.961 hours



We have inaugurated La Bàssà Community Spàce!

La Bassa Community Space (Sant Martí de Maldà)

After much effort, Alba has inaugurated the La Bassa Community Space in Sant Martí de Maldà, a center designed to promote inclusion and care for people with disabilities and older adults in rural areas.

The inauguration ceremony was attended by prominent authorities, including His Excellency Mr. Salvador Illa, President of the Generalitat of Catalonia.



Residential home
24 places

Day center for older adults
20 places

Specialized Health Services

We offer various health services such as physiotherapy, nursing, and psychology to improve the well-being of older adults.

Multisensory Stimulation Spaces

Additionally, the space includes various areas designed so that anyone who needs it—such as people with disabilities, older adults, or other groups—can interact with their surroundings through sensory stimulation in spaces specifically created for this purpose.

Sensory spaces:

- Multisensory Room
- Calm Room
- Water Space
- Sensory Gardens



Housing and Independent Living

02 Support for People

We support people with disabilities and those at risk of social exclusion so that, with the necessary assistance, they can decide how they want to live and make their life projects a reality.

300 people use the housing and independent living services

+18.11% compared to 2023

Residential homes:

4 homes

Home Alba · 13 people
Home Aleix · 37 people
Home Mestre Martí · 6 people

29 people on the waiting list

Social housing units:

52 apartments

48 apartments in the Social Inclusion Housing Network.
28 apartments are owned by Alba.

67 people on the waiting list



Home Care Service:

We provide support to older adults, people with disabilities, families, and young people with special needs so they can continue living in their own homes.

107 people

+15.05% compared to 2023

Support Products Bank (BPS):

A lending and advisory service aimed at improving the daily lives of people with functional limitations in the Urgell and Segarra regions.

54 people

Independent Living Support Service (SASVI):

This home-based service promotes autonomy and improves the quality of life for people with disabilities or mental health challenges.

29 people

Mental health and well-being

02 Support for People

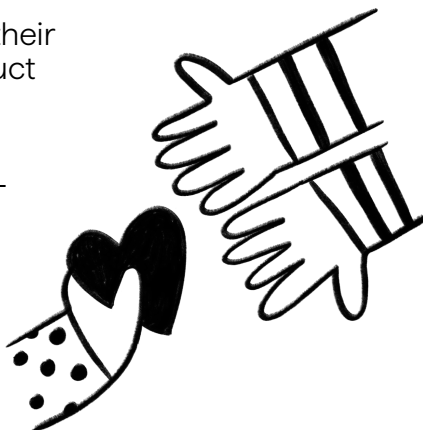
Mental health

AAAt Alba, we support people diagnosed with mental health conditions to help them regain their autonomy, rebuild relationships, and reconstruct their life projects.

101 people use the services focused on mental health

People by the mental health services they use:

- 28 Pre-work and training services at Enfoc.
- 27 Independent Living Support Service (SASVI).
- 3 SASVI services for families.
- 0 Family School.
- 6 Alba's social housing apartments.
- 23 Special Employment Center (CET).
- 4 "Som Rurals, Som de Muntanya" personal assistance project.



Well-being

In addition to providing specific mental health services, the organization also offers other support to improve the well-being of all people with disabilities.

Nursing

71,5h per week

Physiotherapy

40h per week

Canine therapy

177h per year

Physical activity

20h per week

Multisensory

850h per year

1 multisensory room
2 calm rooms

Psychology

236h per week

Psychiatry

73h per year

Equine therapy

313,5h per year



Culture and leisure

We understand culture and leisure as fundamental rights that must be exercised freely.

Through art, expression, and cultural participation, we strengthen self-esteem, promote inclusion, and create connections with the community.

406 people with disabilities have participated in cultural and artistic projects.

Cultural and artistic activities in which they have participated

14 activities

Artistic disciplines worked on

10 disciplines

Artistic Connections

A shared creation project between people with disabilities from Alba and professional artists that allows exploration of various artistic disciplines. The project aims to make visible talents that often remain hidden.

41 people

Singular Art

We participate in the artSingular program of the Josep Santacreu Foundation, which promotes artistic creation centers for people with disabilities.

18 people

Apropa Cultura Lleida

We are a collaborating organization in the Apropa Cultura program, an initiative that promotes universal access to culture and enables people in vulnerable situations to enjoy cultural activities.

682 people have enjoyed Apropa activities.

02 Support for People



Training and Work

Through the Enfoc training and employment insertion service, we create jobs with specific training for people with disabilities and those at risk of social exclusion. Through our job pool, we collaborate with local companies looking for talent.

112 participants in training for employment

19 people with intellectual disabilities
21 people diagnosed with mental health conditions

Through the programs:

- Punt Formador Incorpora
- New Opportunities for Youth
- ADA (New Technologies)
- SIOAS (Service Assistant)

Pre-employment Service

Service aimed at people diagnosed with mental health conditions, offering training over three years to support job placement.

28 people have used the service

+40% compared to 2023



239 training and employment guidance sessions

Internships at companies

49 people

9 people with disabilities
10 people with mental health challenges

02 Support for People

Job offers managed 115

196 job placements

+9.5% compared to 2023

129

Placements in regular companies

+22.86% compared to 2023

67

Placements in the Special Employment Center (CET)

8 with dis.

18 with dis.

Relationships with partner companies for training and employment:

72 companies

02 Support for People

Training and work

Alba has a Special Employment Center (CET) to guarantee the right to employment for people with disabilities. Alba's CET adapts jobs to each individual and offers a variety of business activities.

161 workers at the CET

+6.58% compared to 2023

Distributed across the following economic activities:

- 67 Cleaning
- 34 Laundry
- 18 Kitchen
- 13 Gardening
- 13 El Rosal Cookie Workshop
- 9 El Gat Restaurant
- 7 Alba Common Services

Sales volume

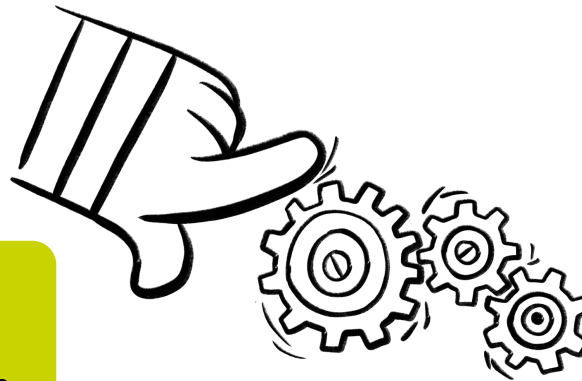
3.8M

+6.87% compared to 2023

Customer volume

1.002

+18,86% compared to 2023



78

People with disabilities at the CET

23

Mental health diagnosis

59

Support professionals

24

People at risk of social exclusion

24 people at the Social Integration Company

It works to support the labor insertion of people at risk of social exclusion, accompanying them for three years in their professional development.

International projects

At Alba, we have been committed for over 25 years to opening up to the world through European volunteering and international projects. We aim to promote innovative initiatives that can create a real impact on people's quality of life both locally and globally.

406 European mobilities completed

+156.96% increase in European mobilities.

Youth hosted through European projects

104 youth

101 youth with special needs

Youth sent abroad

42 youth

6 youth with special needs

Youth Support for NEETs with the ALMA Program

We have hosted groups of "Not in Employment, Education, or Training" (NEET) youth from Germany and Italy, facilitating their work experience and social integration through collaboration with companies and services.

Professional Internships in Portugal (Erasmus+ "Make it Happen")

Five youth completed internships in Portugal, contributing to the development of a support methodology for young people with disabilities.

Consolidation of Membership in EASPD (European Association of Service Providers for Persons with Disabilities)

We have strengthened our connection with EASPD by participating in its annual Assembly and conference in Athens.

Exchange with SPACE MAKERS (Erasmus+)

A work stay in Toulouse and hosting the partner organization have allowed us to apply innovative improvements to our organizations.

Strengthening international relationships with overseas organizations.

02 Support for People





03 Services for Companies

We guarantee the right to work for people with disabilities.

We adapt jobs so that each person can develop their potential, carrying out this through various business activities.

Cleaning Service

The cleaning service has the highest number of workers within the organization. Its main clients are local companies committed to quality service with a social impact.

67 workers

Monthly clients

160 clients

Billing

1.176.295€

+ 2.68% compared to 2023



03 Services for Companies

Laundry service

Alba's laundry service has a facility equipped with large-capacity washers, dryers, and calenders, as well as specialized machinery for washing and ironing clothes.

34 workers

The main client of the laundry service is the Arnau de Vilanova Hospital in Lleida, awarded through public tender. It accounts for 45% of the kilograms of laundry processed by the service..

Monthly kilograms of laundry

40.000

+9.29% compared to 2023

Annual clients

125

Billing

831.145€

+ 13,13% compared to 2023

Gardening Service

The gardening service offers comprehensive solutions for the maintenance of green areas. We work with public administrations, companies, and private clients.

13 gardening workers

Monthly clients

20 clients

Agreements with Municipalities

4

Billing

205.171€



Collective Catering Kitchen

Alba's collective catering kitchen provides high-quality service for communal dining rooms, especially in residential and educational settings. We meet the dietary needs of people with swallowing difficulties, allergies, and other requirements, **offering 45 variations of adapted menus.**

18 collective catering kitchen workers

Annual clients

125 clients

Daily menus

475 menus

Billing

619.930€

+ 7,60% compared to 2023

El Gat Restaurant

El Gat restaurant offers homemade, locally sourced cuisine in a buffet-style format, providing breakfasts, lunches, space rentals, and catering services for groups.

9 professionals at El Gat Restaurant

Daily menus Daily breakfasts

51 **61**

Caterings carried out

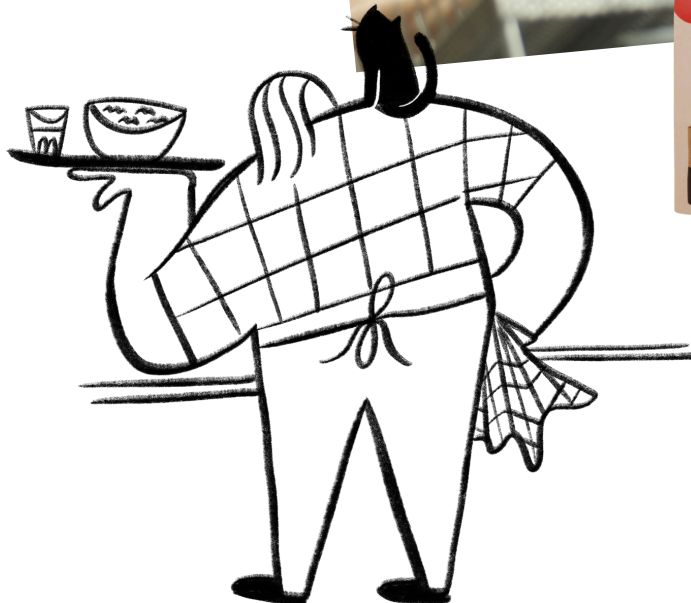
29

Event space rentals

31

Billing

343.006€



New Assortment!

El Rosal Cookie Workshop

Galetes El Rosal is a century-old cookie brand with a strong social commitment. We make artisanal cookies, handcrafted one by one, using quality, locally sourced ingredients. Our best-known cookie is the Arrugats!

13 professionals at El Rosal Workshop

28 professionals during the Rose and Christmas campaigns!

Kg of cookies
24.900 Kg

Billing
667.205€

+ 12,7% compared to 2023



04

Organization

We believe in a healthy, innovative, and sustainable organization to continue working towards guaranteeing people's rights and supporting them in achieving their life projects at every stage of their lives.

Healthy organization

We are an organization that cares for the people who are part of it, because we know that work can only be transformative if it is done from a place of well-being. We believe it is essential to work in a safe, humane environment where everyone has a voice, spaces to grow, and where all professionals feel valued.

Professionals' ratings in the following areas of well-being

Results according to the Social Balance survey.

Work-life balance

8,6/10

Work environment

8,15/10

Participation

7,2/10

Training and professional growth

7,6/10



3,347 hours of training for professionals

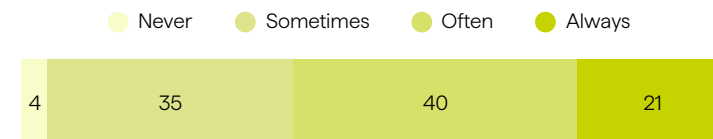
The professionals rate their overall satisfaction with being part of the organization as 8.02.

04 Organization

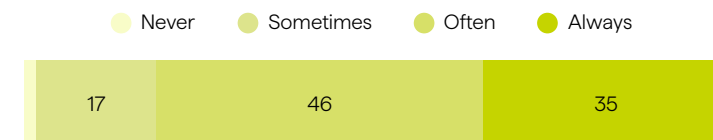
First psychosocial study of Alba's professionals

We conducted a study using the inclusive psychosocial risk assessment method Aripso, with participation from 68% of the professionals.

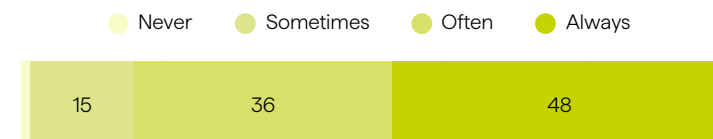
I like how emotional problems are addressed



I am happy when I am working



I am proud of my work



Innovative organization

For Alba's professionals, innovation is part of who we are and how we work. As a social economy organization, we combine positive impact and sustainability to create opportunities and offer services with added value. Facing every challenge, we explore new ways to improve people's quality of life. Through experimentation and networking with organizations, companies, institutions, and universities, we develop projects that transform the reality of many vulnerable people. Alba is innovation because it evolves, learns from others, and drives initiatives that break down barriers and promote a more equal and inclusive society.

Areas of focus

- Knowledge management.
- Promotion of quality and process improvement.
- Encouragement of an innovation culture.
- Impact evaluation.

75 professionals have participated in defining Alba's innovation process

Incorporation of a professional profile to drive innovation within the organization.

20h per week

Highlighted projects

Social Impact Evaluation

We have started a study to define Alba's key social impact indicators.

Process Improvement

We are researching digital tools, AI, internal communication, task planning, and management solutions to continue advancing our digital transformation.

Solidigital Technology Project

A cross-border collaboration project among associative actors from Catalonia, Andorra, and the French regions of Ariège, Pyrénées-Orientales, and Haute-Garonne. Its goal is to support people in vulnerable situations through three tools: Soliguia, Nidus, and Reconnect's Virtual Safe. Alba is responsible for deploying these tools in the province of Lleida. This project is led by the iSocial Foundation.

04 Organization

Hiring of a person to explore technological improvements and AI

20h per week

Creation of an innovation driving team with a cross-disciplinary approach

8 professionals



Sustainable organization

04 Organization

We believe in a future that respects both people and the planet. That's why we promote actions to reduce environmental impact and contribute to a fairer and more sustainable economic model.

A 26.71% reduction in CO2 emissions per professional compared to 2023

Waste management

We have joined the door-to-door collection system, further improving waste sorting and recycling.

Electric vehicles

2 new vehicles

bringing the total to 4 electric vehicles.

Forest responsibility

We use recycled paper certified for sustainable forest management.

Energy Efficiency

La Bassa Building (Sant Martí de Maldà)

Equipped with a rain water collection and purification system.

Generates 100% of its electricity through solar panels.

Antic Museu Building (Verdú)

Generates 60% of its electricity through solar panels.

El Taller Building (Tàrraga)

Generates 19% (80 Megawatts) of its electricity through solar panels.



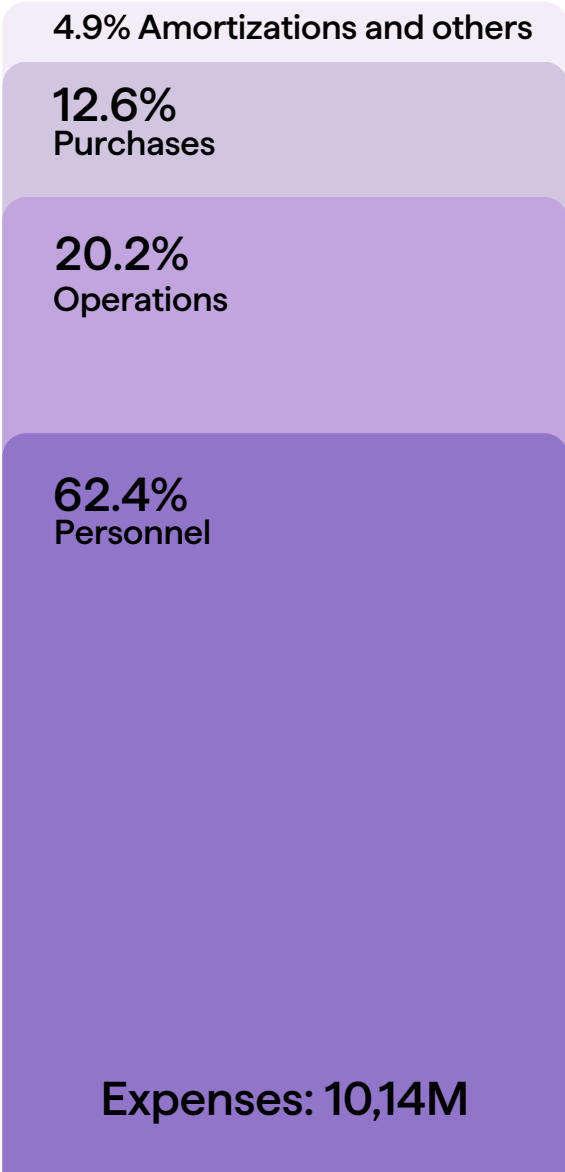
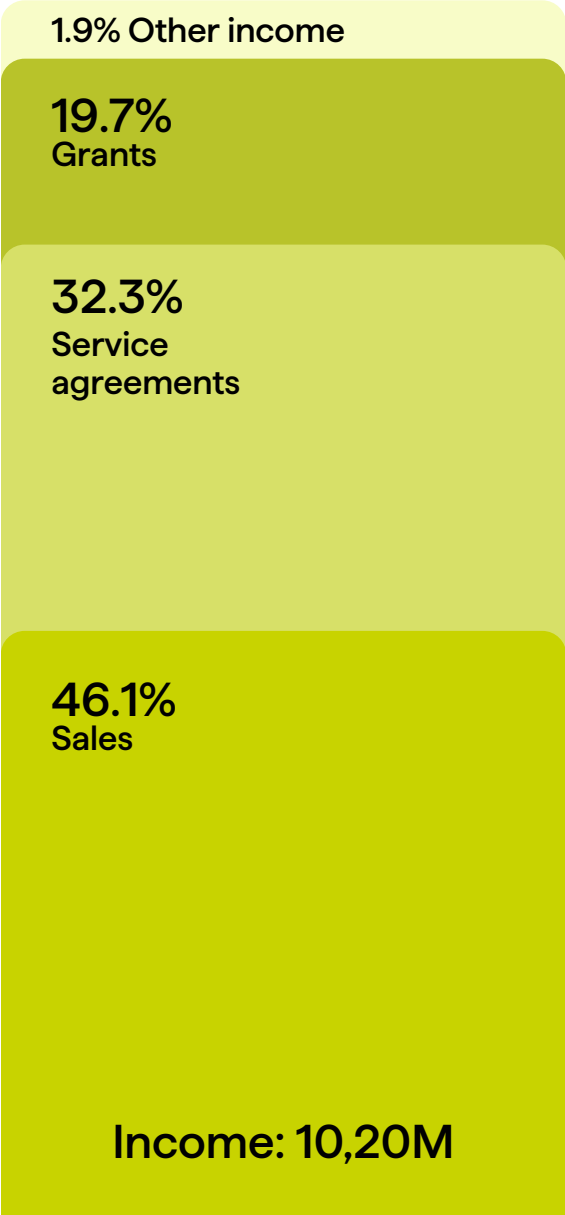


05 Trànspàrency

Transparency is essential to continue building an inclusive and committed community that keeps trusting Alba, supporting us, and helping to create a more inclusive future.

Economic sustainability

Closing of the 2024 fiscal year



Main investments in 2024

05 Transparency

Summary of main investments

344.560€

45,5% subsidized

Educational and therapeutic resources

Furniture, works at CO Guissona and Verdú. Air conditioning and legalization at Cal Carreter.

121.522,6€

Special Employment Center (CET)

Laundry and kitchen vehicles, machinery, and air conditioning at El Rosal.

133.195,6€

Housing and independent living

Furniture and thermal panels at Llar Aleix.

67.703,3€

IT equipment

Computers, laptops, monitors...

22.138,4€



Funds raised with the support of the Alba Futur Foundation

160.512,82€

Some of the main funded projects:

Maintenance of Occupational Centers

27.849€

Activities at Alba School

16.105€

Multisensory Rooms at La Bassa

13.947€

Collective catering kitchen

8.400€

Yard Alba School

4.421€

Sexuality and affectivity

4.000€

Occupational Center Camps

3.000€

TEA material, and Multisensory

2.938€



06 Territory

At Alba, we understand the territory as a living space where we build connections, share values, and create opportunities. Our commitment to the social and solidarity economy, cooperation, and alliances drives us to act with responsibility and rootedness. We engage in political advocacy to defend rights, promote awareness to transform the world, and actively participate in the community to make it more inclusive and engaged.

Political advocacy

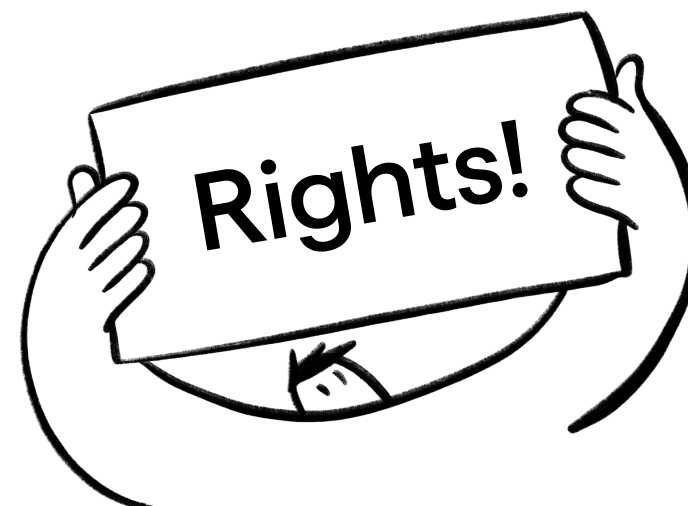
06 Territory

Political advocacy is essential to defend people's rights by raising awareness within institutions, building alliances, and driving legislative changes. That's why Alba promotes various political advocacy actions throughout the year.

Creation of a rights advocacy team

Composed of 4 people with disabilities and 2 professionals

We have created a rights advocacy team made up of people with disabilities from our organization, representing a wide range of perspectives, abilities, and ages. With an intersectional approach, this team drives political advocacy actions from their own voice and experience.



89,700 views of the "Petem Bombolles" campaign

International Day of Persons with Disabilities

With the "Petem Bombolles" campaign, we denounced the overprotection that often surrounds people with disabilities—an invisible barrier that limits their autonomy and right to make decisions. This campaign, presented as an Instagram reel, allowed us to spread the message far and wide, reaching 89,000 views and impacting people with disabilities, their families, and the general public.

06 Territory Alliances

Collaborators:

- Pere Gassó
- Plusfresc
- Procat Medical
- Rotecna
- Seguí Clima
- Semillas Fitó
- Serunion
- Servinet
- Servisimó
- StaffArt
- Torrons Vicens
- Vilardosa
- Paupaterres Produccions

Organizations and companies we collaborate with and share projects:

- Olivera Cooperativa
- Fundació Casa Dalmases
- Club Alba
- Xercavins
- Cia l'Anònima
- Coixos de Verdú
- Escola Vedruna
- Escola Tècnica Superior d'Arquitectura del Vallès (ETSAV)
- Residència Sant Pere Claver (Verdú)
- Residència Mare Marcelina (Verdú)
- Ajuntaments de l'Urgell i la Segarra.
- Cooperativa de Lleure Quàlia

- Cooperativa Alba Jussà
- Fundació Carulla
- Fira Tàrraga
- Torrons Félix

Recognitions:

Premi de l'Associacionisme Cultural Català ENS - Antoni Carné al "Projecte Bòlit, Jocs Tradicionals".

Quality accreditations:



Main funders:



Incorpora



Go-getters

Avd. Onze de Setembre
25300, Tàrrega (Lleida)
info@aalba.cat
www.aalba.cat
[@som.alba](https://www.instagram.com/som.alba)

